

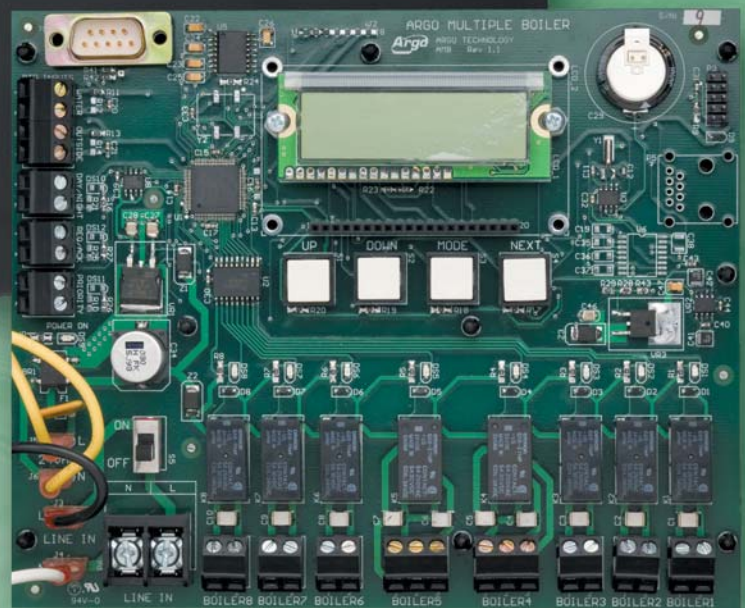


# MODULAR BOILER CONTROLS

COMMERCIAL/RESIDENTIAL



**AMB4A/AMB8A**



## MODULAR BOILER CONTROLS

*Consistent, Cost-Effective Comfort*

- Domestic Hot Water Priority
- Adjustable Outdoor Temperature Setback with Sensor – adjusts boiler temperature to save fuel
- Fixed 20°F Night Setback Option and Warm Weather Boiler Shutdown for additional fuel economy
- Adjustable Minimum Boiler Water Temperature
- Equal run time rotation for added longevity through uniform system component usage
- Commercial Grade, Locking Steel Cover
- Digital Display

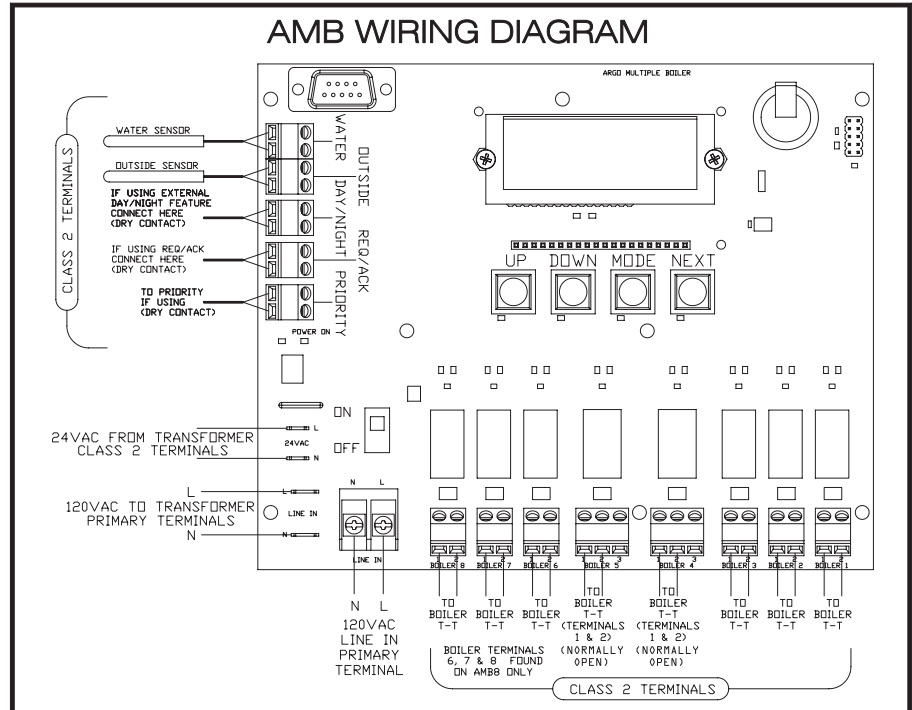
***Ideal for multiple boiler system applications – firing large capacity boilers with stage capability.***

# MODULAR BOILER CONTROLS

COMMERCIAL/RESIDENTIAL



Argo Modular Boiler Controls provide cost-effective comfort in multiple boiler residential and institutional applications. These controls adjust the boiler water supply temperature based on outdoor temperature fluctuations, lower off-peak period demand and prioritize domestic hot water needs. They also contribute to the longevity of your heating system investment by regulating individual boiler run time and lead boiler rotation for more uniform component usage.



## AMB4A/AMB8A

### Technical Data & Specifications

- Compatible with Fixed Capacity and Modulating Boilers – Interfaces with any boiler that accepts a dry contact
- Number of Stages: AMB4A (4), AMB8A (8)
- Incoming Power: 120 VAC, 60Hz
- Relay Capacity:  
AMB4A  
3 x SPST, 24 VAC 5 Amps  
2 x SPDT 24 VAC, 5 Amps  
AMB8A  
6 x SPST, 24 VAC 5 Amps  
2 x SPDT 24 VAC, 5 Amps
- Control Processing: PID Algorithm
- Temperature Control Accuracy: 2°F
- Sensor Accuracy:  
Up to 500' with 18 AWG Cable
- Dimensions: 11 3/4" x 8 1/4" x 2 1/2"
- Weight: 13 lbs.
- Locking Cover

### Programmable Features Include:

- Heating Curve Reset Ratio (0.2 to 5.2)
- Boiler Differential (1°F to 20°F)
- Minimum Boiler Water Supply Temperature (50°F to 149°F Threshold)
- Equal Run Time via 24 Hr. Rotation of Lead Boiler (On/Off)
- Lo/Hi Fire Rotation – 2 boiler system (AMB4A Only)
- Domestic Hot Water Priority (On/Off) – takes the boiler out of a lower water reset temperature during a call from domestic
- Day/Night 20°F Boiler Setpoint Temperature Setback (On/Off)

### Installation, Operation and Maintenance

- Industry Standard Connections
- Easy Operation:
  - Adjust Mode
  - Review Mode
  - Run Mode
  - Auto Test Mode
- Programmable memory not affected by power loss
- Self Diagnostic Feature on Start-Up



2201 Dwyer Ave., Utica, New York 13501  
 Phone: 315-797-1310 • Fax: 866-432-7329  
 www.argoindustries.com  
 E-mail: info@ecrinternational.com

**USA Homeowner Assistance: 866-847-6656**  
**Contractor Technical Service: 800-325-5479**